

## GMA400-700AW Auto Mixing Station

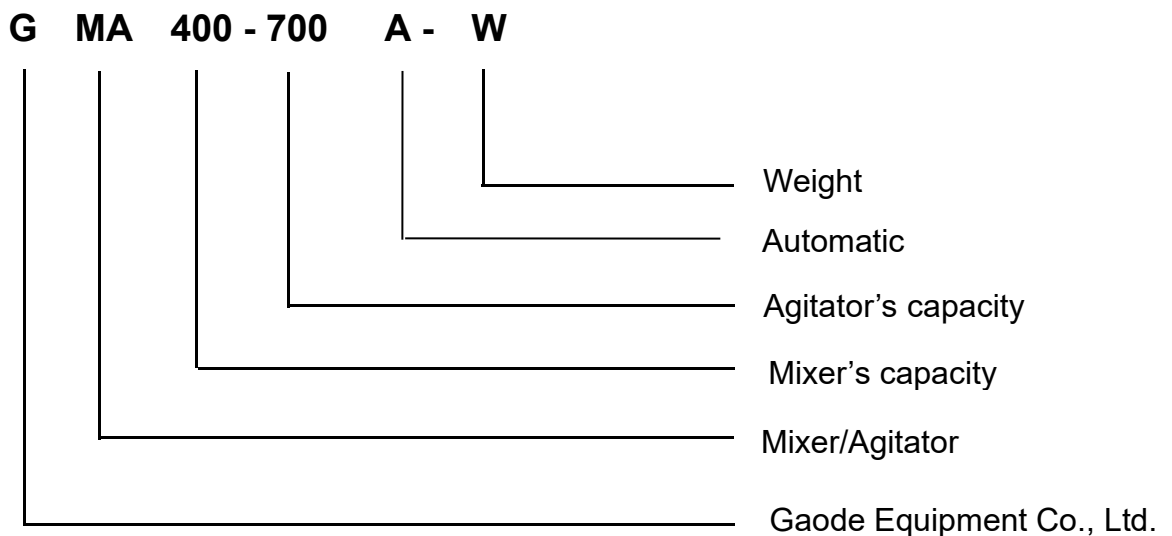
Powerful, Compact and Reliable

### 1. Description

GMA400-700AW Auto Mixing Station is a combination of screw feeder, mixer, agitator and Auto weighing system based on PLC in one base frame. It is mainly used to be made the cement or bentonite slurry in the highway, railway, hydropower, construction, mining and other ground and underground construction applications.

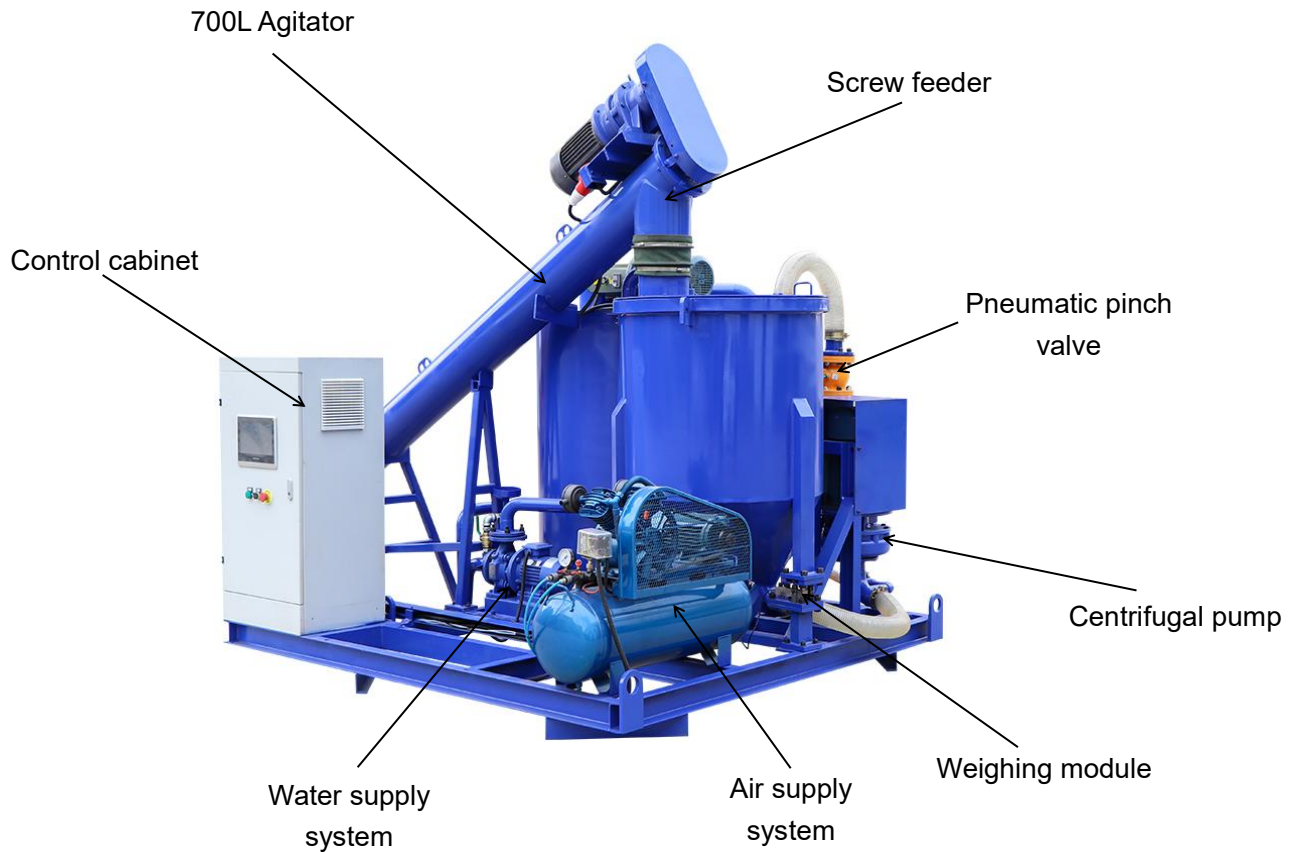
High-speed, high-shear colloidal mixer cause a vortex flow to ensures mix quickly and evenly. Compared with the traditional manual operation mode, this station has added the automatic operation mode, which greatly improves the working efficiency. Compact size and it is easy to operate. It also takes up a small space.

### 2. Model Definition

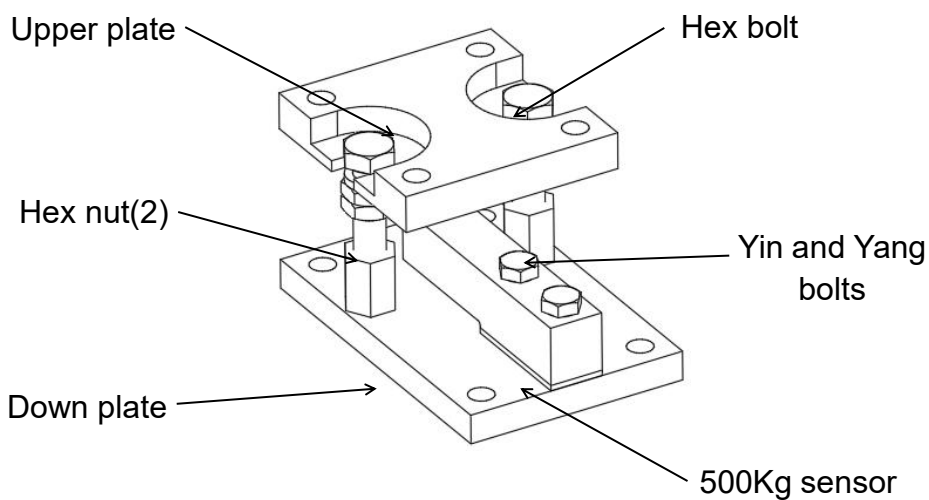


### 3. Features

GMA400-700AW Auto mixing station is a fully automatic grouting machine.

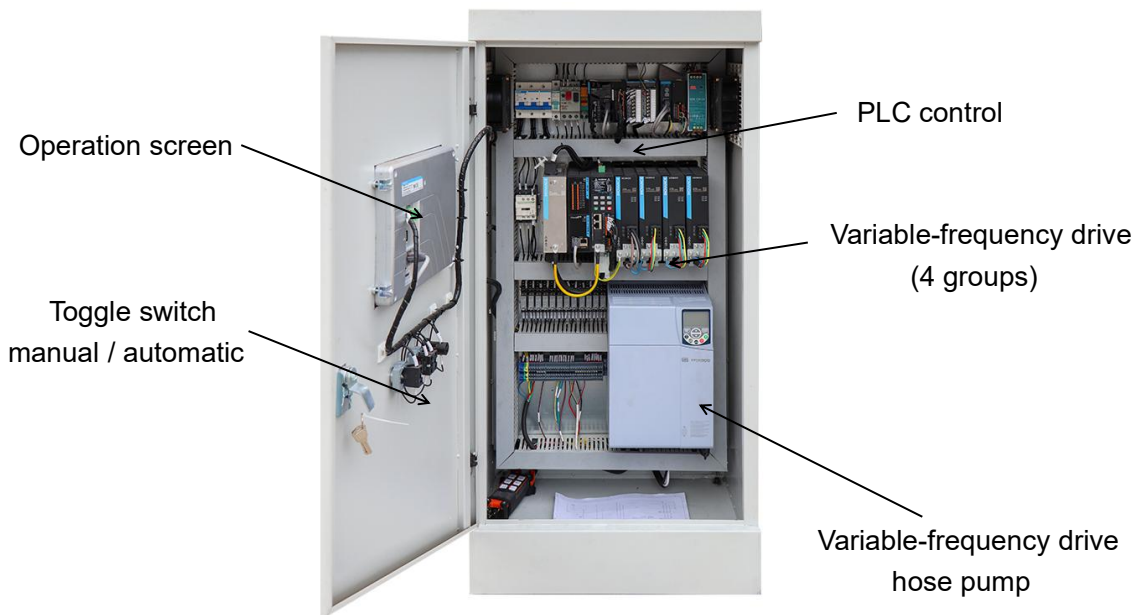


- ◆ 3 sets of stable weighing modules
- ◆ Lower charging material height for mixer
- ◆ High-speed colloidal grout mixer
- ◆ Smoothly outflow slurry through pneumatic pinch valve

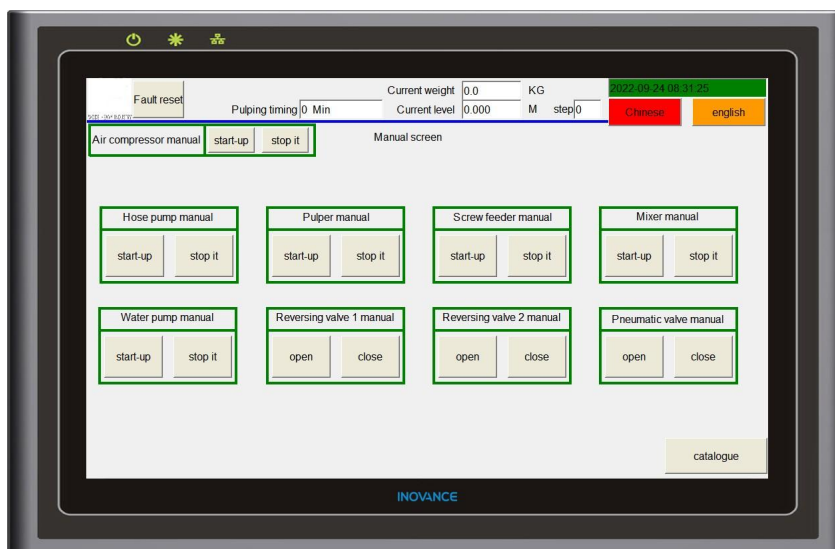


◆ Precision of the ultrasonic liquid level meter

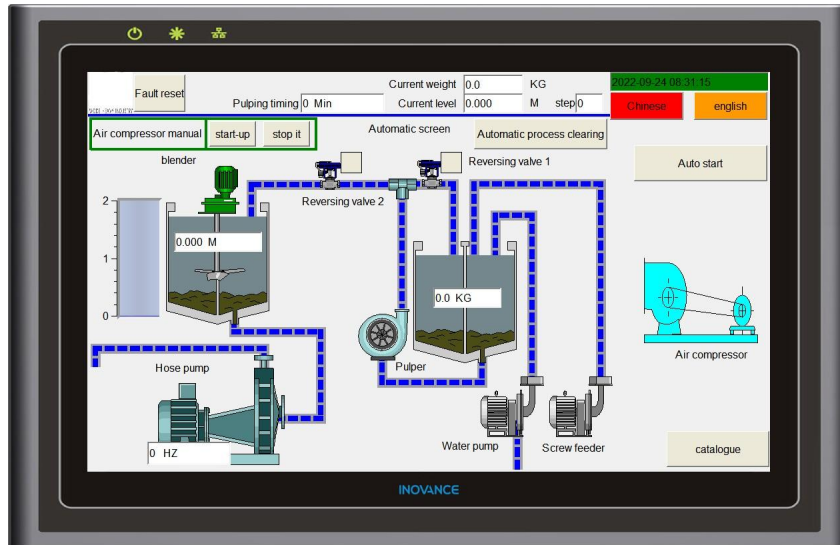
◆ Remote control of the hose pump



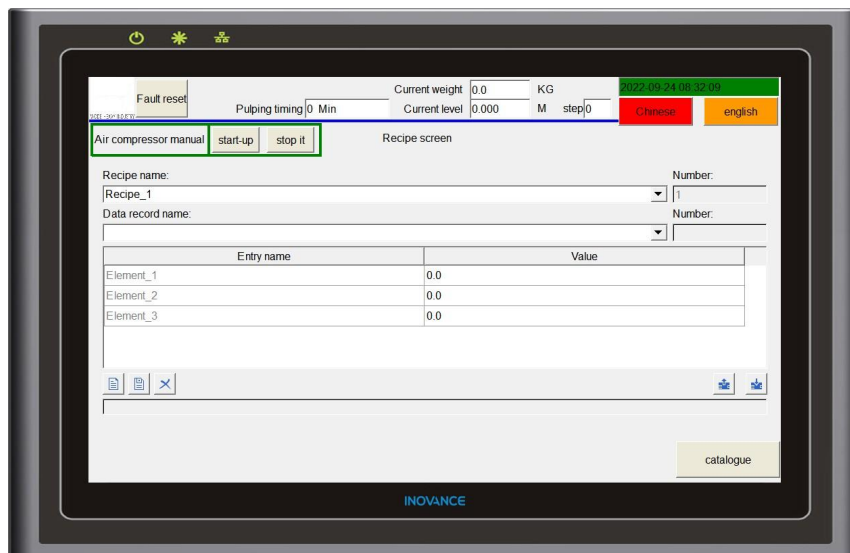
- ◆ Variable output with variable-frequency drive of all motor
- ◆ PLC machine control



Manual Interface



Fully Automatic Interface



Formulations Interface

- ◆ Visualization interface
- ◆ Simple operation interface
- ◆ Manual mode and fully automatic mode
- ◆ Multiple formulations can be set up

#### 4. Technology Sheet

<b>Specification (with electric motor drive):</b>		
1. Pneumatic pinch valve: the slurry flows more smoothly.		
2. Ultrasound fluid level meter: height of agitator can be accurately measured.		
3. Variable-frequency drive: all motor can be output with variable-frequency.		
4. PLC+touch screen : manual mode and fully automatic mode.		
5. Remote control : control hose pump: start, stop, accelerate, deceleration.		
Mixer	Effective volume	400L
	Max.mixing capacity	10m <sup>3</sup> /h
Centrifugal pump	Motor power	7.5Kw
	Rotating speed	1450r/min
	Circulation capacity	1400l/min
Agitator	Effective volume	700L
	Motor power	2.2Kw
Water supply system	Motor power	1.5Kw
	Displacement	8.8m <sup>3</sup> /h
	Head	21.5m
Air supply system	Motor power	1.5Kw
	Displacement	0.15m <sup>3</sup> /h
Control system	Mode	PLC

## 5. Machine Pictures Gallery





## Gaode Equipment Co., Ltd.

Add: No.9, Building 14, Yard No.4, Fengqing Road, Jinshui District, Zhengzhou, Henan China

P.C.: 450011

Web: [www.gaodetec.com](http://www.gaodetec.com)

Email: [info@gaodetec.com](mailto:info@gaodetec.com)

Tel.: +86-371-55951660

Fax: +86-371-63526676