



GAODETEC

MAT250/350/60HD Hydraulic Grout Station/Plant

Description

MAT250/350/60HD Grout Station is a hydraulic driven combination of mixer, agitator and grout pump, it is specially design for continuous cement mixing and grouting in ground/underground engineering. It can fast mix water, cement and additive, then the mixed slurry can be stored into a 300 liters agitator, thus the mixing work can continuously be done.

Feature

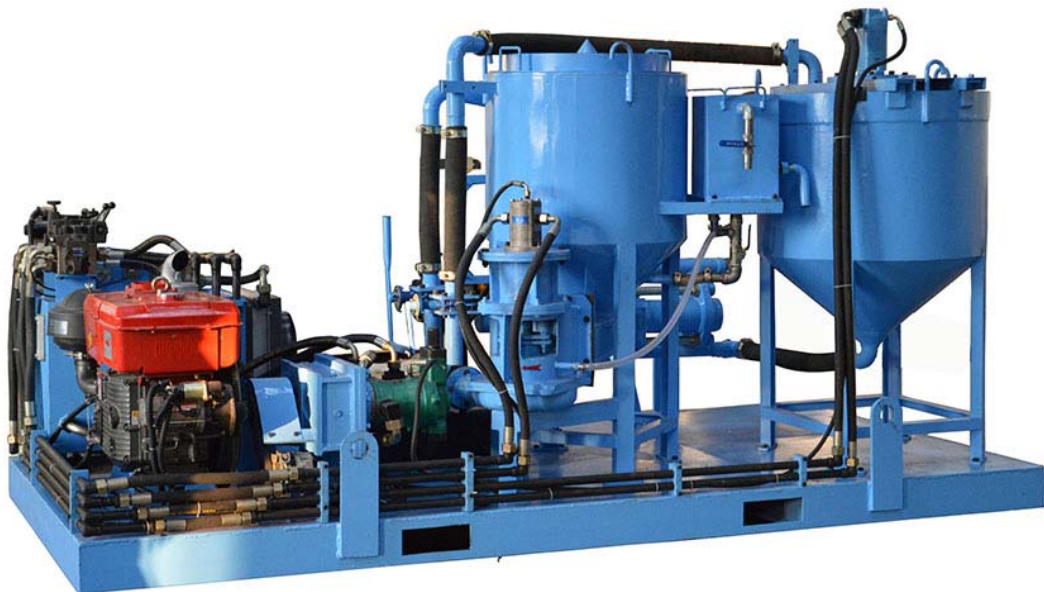
1. Compact size, It is combination of mixer, agitator and piston grout pump in one base frame;
2. Yuken relief valve and directional valve for hydraulic system of grout pump;
3. Butterfly valve of mixer and agitator;
4. Oil temperature gauge can automatically control cooler fan working in normal temperature range, if temperature is too high, the machine will stop work automatically;
5. Operation and maintenance are simple;
6. With ISO, CE certificate.

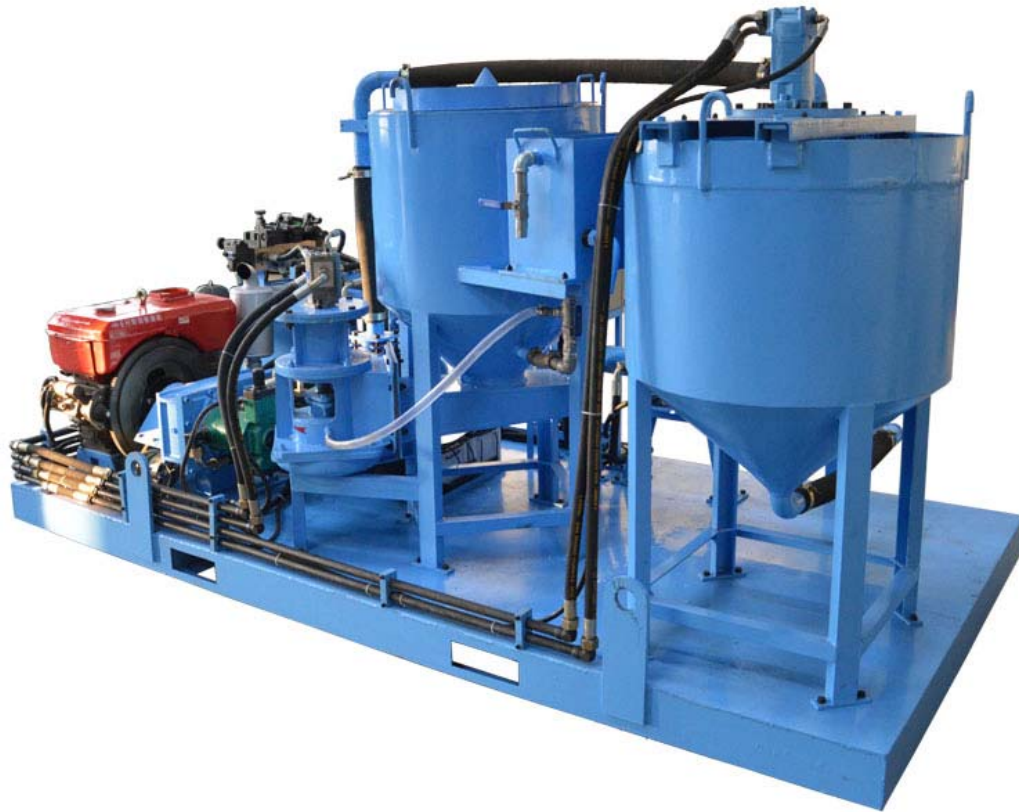


Technical data

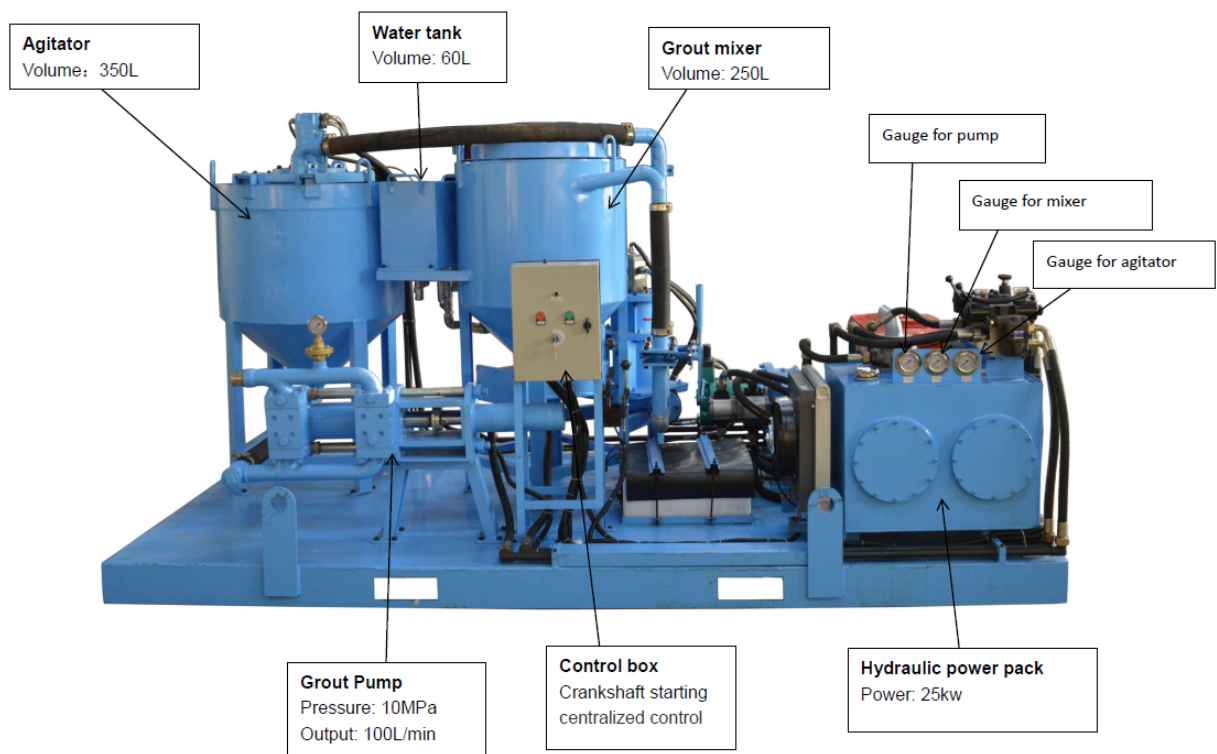
Description	Data
Grout Station type	MAT250/350/60HD
Mixer Volume	250L
Mixer production(w/c ratio=1)	4 m3/h
Circulation capacity	1200l/min
Suitable W/C Ratio	0.5 to 1
Agitator Volume	350L
Agitator Speed	36rpm
Water tank	60L
Grout Pump Type	GDH90
Grout pump output(Max.)	100L
Grout pump work pressure	10MPa
Grout Station Overall dimension	3300x1650x1500mm
Grout Station Weight	1400kgs
Note:MAT250/350/60HD is a combination of mixer, agitator and grout pump in one base frame	

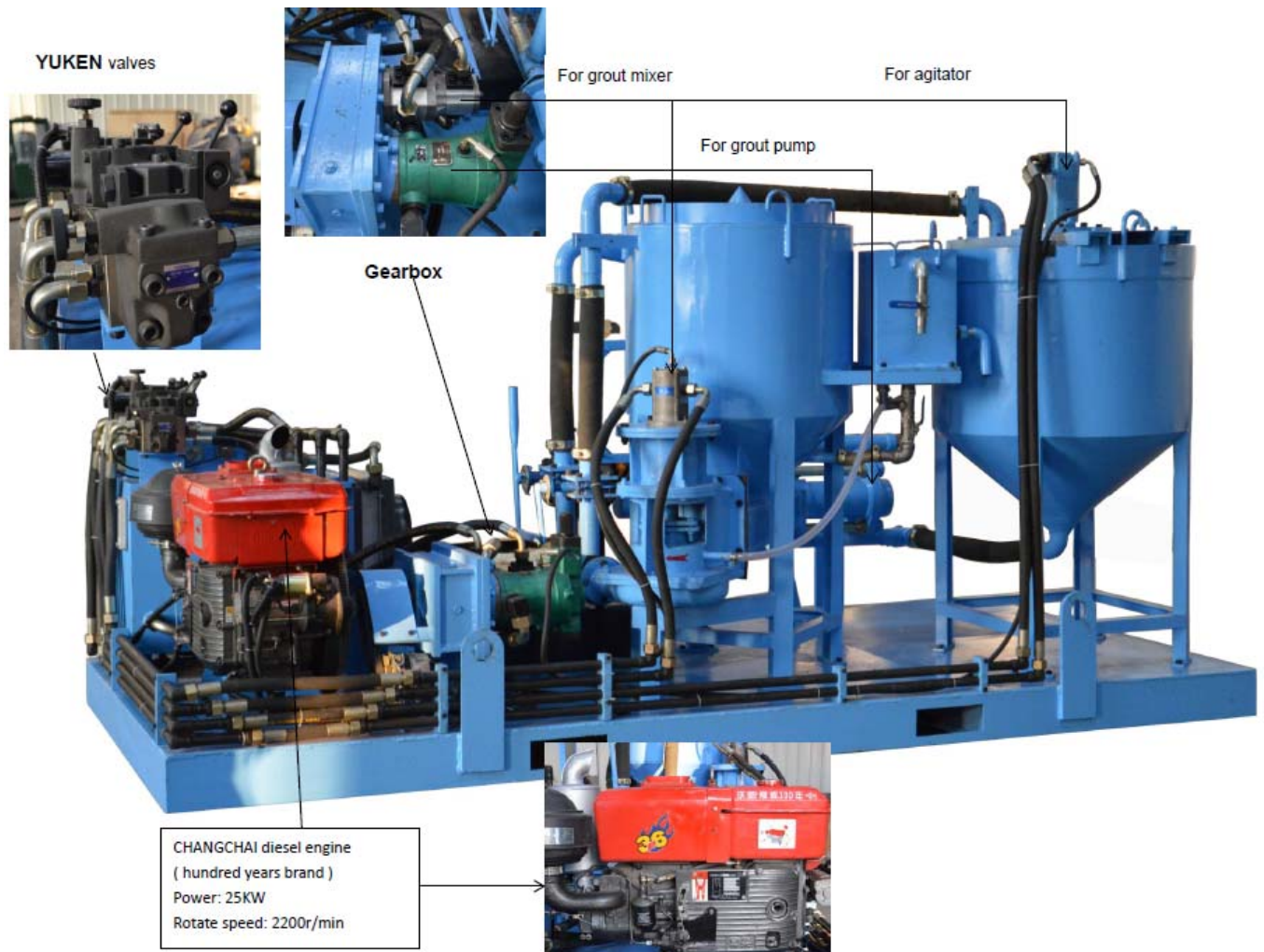
Pictures in different angles:





Detailed parts





郑州高德机械设备有限公司

Gaode Equipment Co.,Ltd.

No.9, Building 14, Yard No.4, Fengqing Road, Jinshui District,
Zhengzhou,China

Phone: +86-371-55951660/55951210

Mobile phone:+86-13939067523

email: info@gaodetec.com

Web: www.gaodetec.com

www.grout-pumps.com